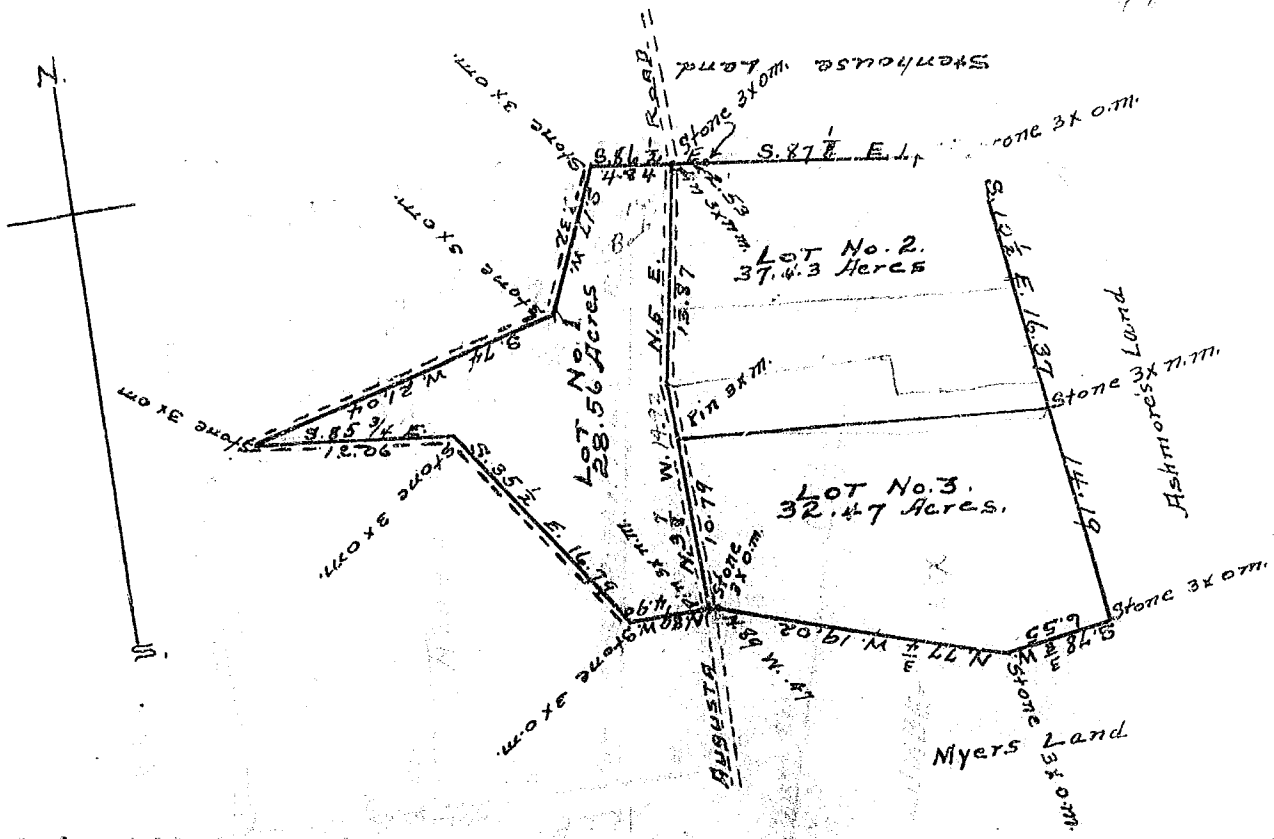


32.47
37.43
28.56
17.46

1790



7
21
2
23

See Plat 1112

Scale of 10 chs. per 1 inch.

State of South Carolina,
County of Greenville.

By request of Mr. Thos. T. Goldsmith, I have surveyed and divided into three lots a tract of land, lying in Cantt Township, County and State aforesaid on both sides of the Augusta Road, about six miles south of the City of Greenville. Said land and the division are represented by the above plat. The dotted lines shown on plat were run by J.N. Southern September 30th, 1908 and the solid lines by myself Jan. 7th, 1918.

W.J. Kiddle, Surveyor.

Recorded March 14th, 1918

Copied and certified to by James R. Bates, P.M.C. for G. Co.S.C.

BAD COPY

